

| SYM. | DOOR SCHEDULE  |
|------|--|
| D1   | 36"x 80" STEEL/STEEL W/10"x10" VIEW BLOCK W/SAFETY GLASS, 20 GAUGE DOOR, 18 GAUGE FRAME, LEVER HARDWARE, STANDARD CLOSER |
| D2   | 36"x 84" BRONZE/BRONZE, STORE FRONT W/SAFETY GLASS, STANDARD CLOSER  |
| D3   | 36"x80" SOLID CORE, IMPERIAL OAK, STEEL FRAME, TELL GRADE 2 HARDWARE   |

| SYM. | WINDOW SCHEDULE  |
|------|--|
| W1   | 48"x28" HORIZONTAL SLIDER, DP50, LOW-E INSULATED, BRONZE ALUMINUM FRAME, BRONZE TINTED GLASS |
| W2   | 48"x30" INTERIOR SLIDING, PASS THRU  |

| COLUMN STRAPPING SCHEDULE: |   |
|----------------------------|---|
| (A)                        | (2) 2x4 SYP #2 THIS HALF. (B) (2) 2x4 SYP #2 EACH HALF  |
| (C)                        | (3) 2x4 SYP #2 THIS HALF. (D) (3) 2x4 SYP #2 EACH HALF. |
| (E)                        | (4) 2x4 SYP #2 THIS HALF. (F) (4) 2x4 SYP #2 EACH HALF. |
| (G)                        | (5) 2x4 SYP #2 THIS HALF. (H) (2) 2x6 SYP #2 EACH HALF. |

WITH RIDGE BEAM BEARING STIFFENER

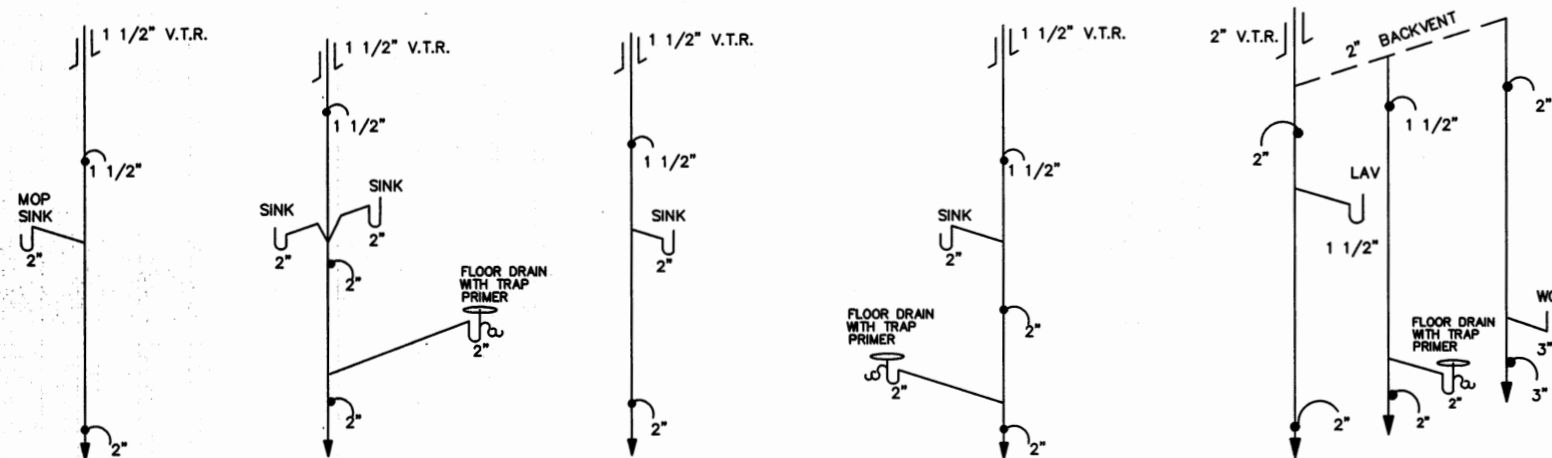
NOTES:

- ALL COLUMN STUDS SHALL BE GLUE/NAILED TOGETHER. PVA GLUE WITH 100% COVERAGE SHALL BE USED.
- INSTALL TWO STEEL STRAPS AT EACH STUD OF EACH COLUMN.
- COLUMN STUDS SHALL NOT BE NOTCHED OR BORED.

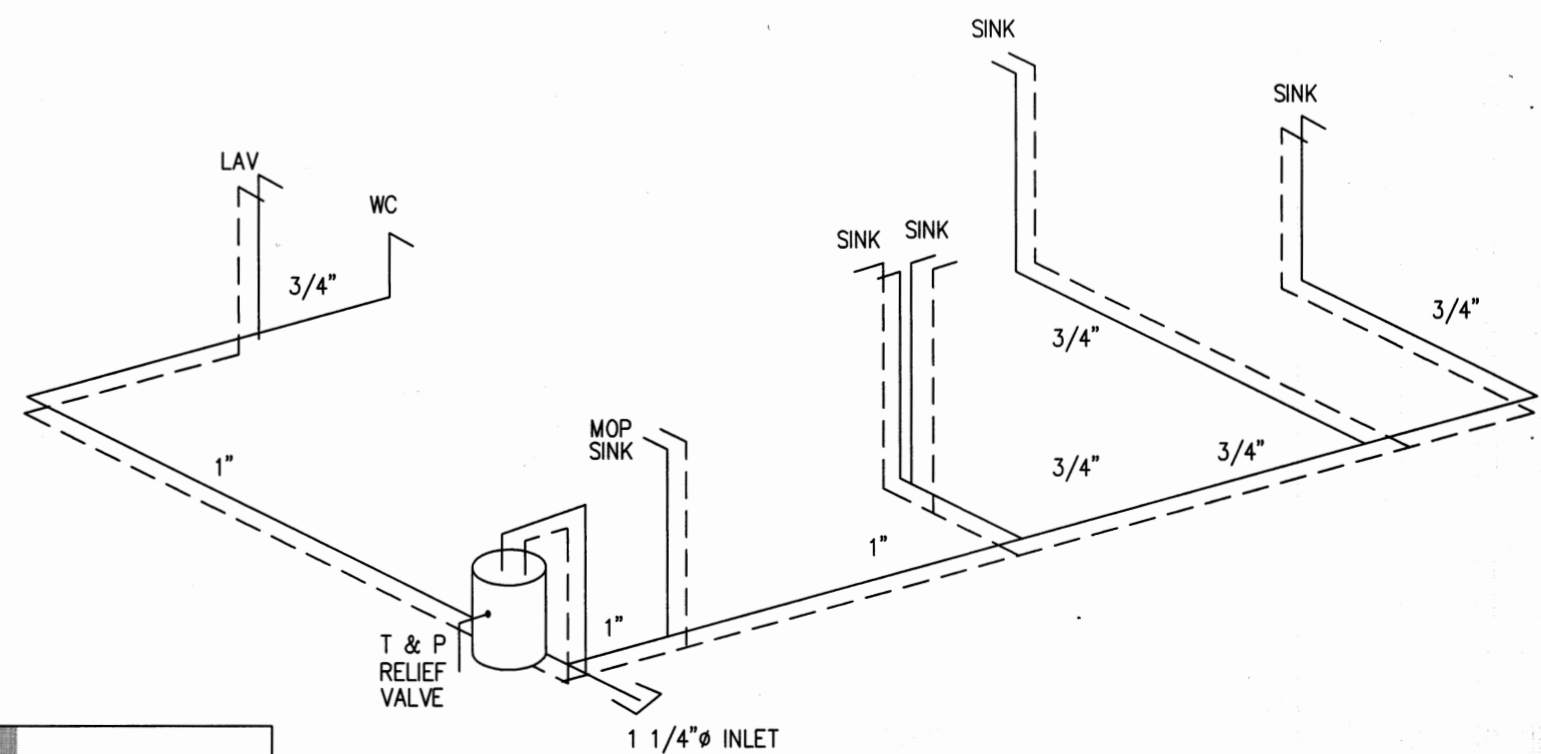
SUPPLY LINE SIZING IS BASED ON AN ASSUMED AVAILABLE PRESSURE OF 46 TO 60 PSI AT MAIN INLET AND SHOULD BE VERIFIED PRIOR TO CONSTRUCTION.

--- COLD  
--- HOT

ALL SUPPLY LINES SHALL BE 3/4". ALL STUB-UPS SHALL BE 1/2" UNLESS OTHERWISE SPECIFIED.



DWV RISER NTS



SUPPLY RISER -NTS-

